



## REGIONAL SPECIALISED METEOROLOGICAL CENTRE -TROPICAL CYCLONES, NEW DELHI TROPICAL WEATHER OUTLOOK

DEMS-RSMC TROPICAL CYCLONES NEW DELHI DATED 27.07.2025

**TROPICAL WEATHER OUTLOOK FOR THE NORTH INDIAN OCEAN (THE BAY OF BENGAL OF BENGAL AND THE ARABIAN SEA) VALID FOR THE NEXT 168 HOURS ISSUED AT 0600 UTC OF 27.07.2025 BASED ON 0300 UTC OF 27.07.2025.**

### LAND:

**Sub: Well marked low pressure area over northwest Madhya Pradesh and neighbourhood**

Yesterday's depression over Jharkhand and neighbourhood moved nearly westwards across Madhya Pradesh and weakened into a **Well marked low pressure area** over northwest Madhya Pradesh and neighbourhood at 0000 UTC and persisted over the same region at 03000 UTC of today, the 27th July, 2025. The associated cyclonic circulation extended upto 7.6 km above mean sea level tilting southwestwards with height.

It is very likely to continue to move nearly westwards across northwest Madhya Pradesh and weaken gradually into a low pressure area during next 12 hours.

As per INSAT 3D Imagery, scattered to broken low and medium clouds with embedded intense to very intense convection lay over east Rajasthan, northwest Madhya Pradesh and Gujarat (minimum Cloud Top Temperature  $-70^{\circ}\text{C}$  to  $-80^{\circ}\text{C}$ ).

### BAY OF BENGAL:

Scattered to broken low and medium clouds with embedded intense to very intense convection lay over north & eastcentral Bay of Bengal, north Andaman Sea, Arakan coast, Gulf of Martaban and Tennaserim coast. Scattered low and medium clouds with embedded isolated moderate to intense convection lay over the rest of the Bay of Bengal and south Andaman Sea.

### \*PROBABILITY OF CYCLOGENESIS (FORMATION OF DEPRESSION) DURING NEXT 168 HRS:

24 HOURS	24-48 HOURS	48-72 HOURS	72-96 HOURS	96-120 HOURS	120-144 HOURS	144-168 HOURS
NIL	NIL	NIL	NIL	NIL	NIL	NIL

**\*NOTE: EVERY 24HR FORECAST IS VALID UPTO 0300 UTC (0830 IST) OF NEXT DAY**

### ARABIAN SEA:

Scattered to broken low and medium clouds with embedded intense to very intense convection lay over south parts of south Arabian Sea. Scattered low and medium clouds with embedded isolated moderate to intense convection lay over the rest of the Arabian Sea, Lakshadweep Islands area Maldives and Comorin area.

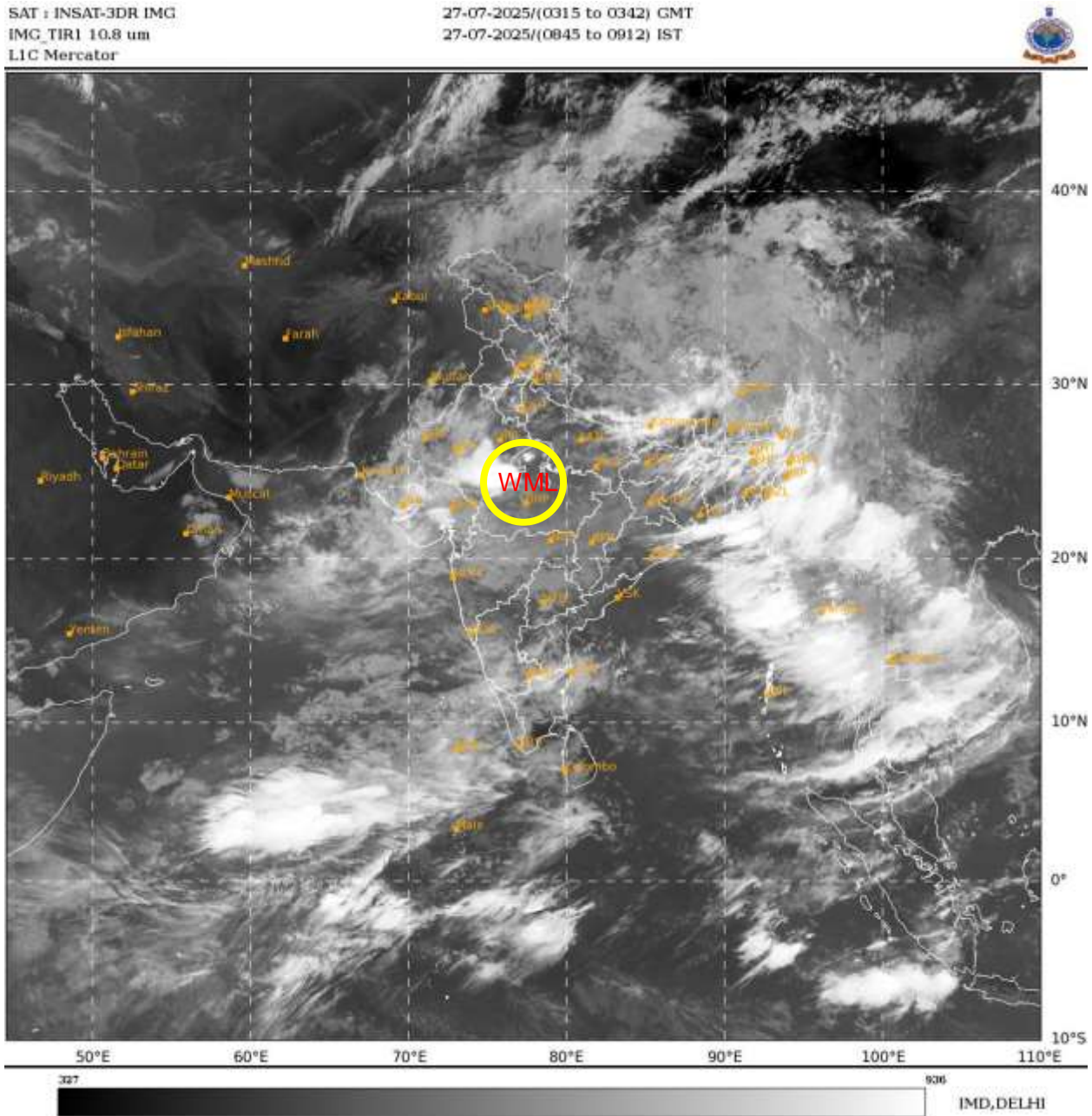
### \*PROBABILITY OF CYCLOGENESIS (FORMATION OF DEPRESSION) DURING NEXT 168 HRS:

24 HOURS	24-48 HOURS	48-72 HOURS	72-96 HOURS	96-120 HOURS	120-144 HOURS	144-168 HOURS
NIL	NIL	NIL	NIL	NIL	NIL	NIL

Cloud distribution: (a) Isolated: <25%, Scattered:25-50%, Broken: 51-75%, Solid:>75%, Convection Intensity: (a) Weak: Cloud Top Temperature(CTT)> $-25^{\circ}\text{C}$ , (b) Moderate: CTT:  $-25^{\circ}\text{C}$  to  $-40^{\circ}\text{C}$ , (c) Intense: CTT:  $-41^{\circ}\text{C}$  to  $-70^{\circ}\text{C}$  and (d) Very Intense: Less than  $-70^{\circ}\text{C}$   
PROBABILITY OF CYCLOGENESIS (FORMATION OF DEPRESSION): NIL: 0%, LOW: 1-33%, MODERATE: 34-66% AND HIGH: 67-100%  
This is a guidance Bulletin for WMO/ESCAP Panel Member countries. Visit respective National websites for Country specific Bulletins

**\*NOTE: EVERY 24HR FORECAST IS VALID UPTO 0300 UTC (0830 IST) OF NEXT DAY**

**REMARKS: NIL**



**WML: Well marked low pressure area**

Cloud distribution: (a) Isolated: <25%, Scattered:25-50%, Broken: 51-75%, Solid:>75%, Convection Intensity: (a) Weak: Cloud Top Temperature(CTT)>-25°C,(b)Moderate:CTT:-25°Cto-40°C,(c)Intense:CTT: -41°Cto -70°Cand(d)Very Intense::Less than -70°C  
PROBABILITYOFCYCLOGENESIS(FORMATIONOFDEPRESSION):NIL:0%,LOW:1-33%,MODERATE:34-66%ANDHIGH:67-100%  
ThisisaguidanceBulletinforWMO/ESCAPPanelMembercountries.VisitrespectiveNationalwebsitesforCountryspecificBulletins